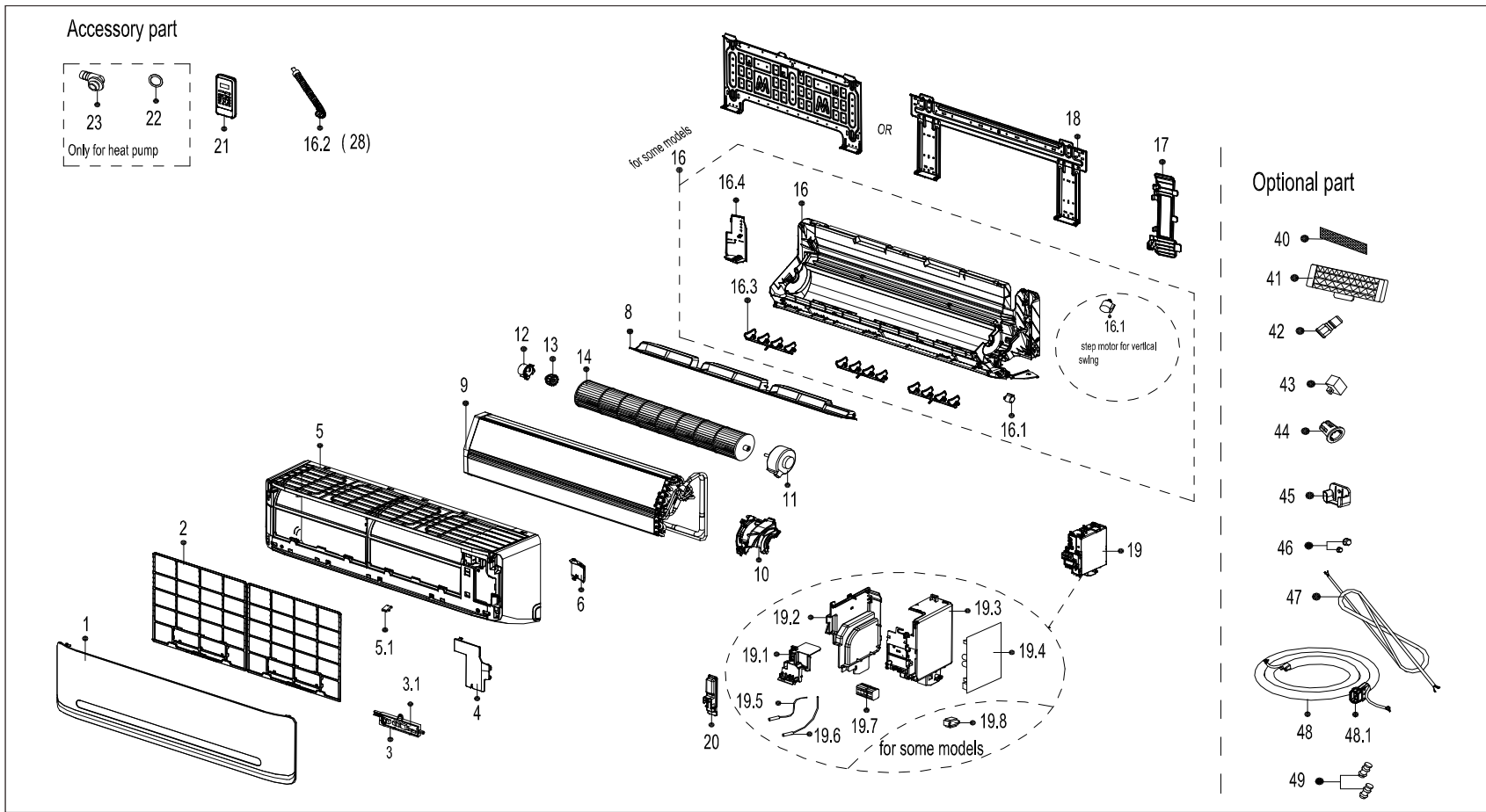


EXPLODED DIAGRAM - PARTS VIEW

Sales Model: KSIV018-H219-IW

Power Supply: 208-230V / 1ph / 60Hz



This information is to be used by qualified HVAC technicians only and is subject to revision without notice

KSIV018-H219-IW - Drawing No. D2IV1908

DATE 19-03

KSIV018-H219-IW - SPARE PARTS LIST

No.	Part Number	Part Name	Specifications	Stock No.	Qty.	Price	Remarks
1	12122000001083	Panel assembly			1	\$62.30	
2	12100204000397	Air filter			2	\$11.25	
3	17222000002837	Display box subassembly			1	\$28.92	
3.1	17122000006953	Display board subassembly			1	\$16.80	
4	12122000006755	Cover of electrical equipment			1	\$4.50	
5	12122000002008	Panel frame assembly			1	\$98.90	
5.1	12122000008242	Screw Cap			1	\$0.15	
6	12122000004592	Front cover of chassis			1	\$1.50	
8	12122000006359	Horizontal louver			1	\$27.00	
9	15822000008214	Evaporator assembly			1	\$277.57	
10	12122000005538	Fan motor cover			1	\$9.30	
11	11002015000139	Brushless DC Motor	ZKFP-30-8-3		1	\$162.53	
12	12122000000350	Bearing holder			1	\$1.05	
13	12622000000006	Bearing base			1	\$2.10	
14	12100102000131	Cross flow fan	GL-98*758-I		1	\$54.10	
16	12122000A26278	Chassis assembly			1	\$188.78	
16.1	11002010000077	Stepper motor	SM-30-17-12-15		1	\$26.64	
16.3	12122000008961	Horizontal louver			3	\$1.05	
16.4	12122000004612	Front cover of chassis(left)			1	\$3.75	
17	12122000012941	Pipe clamp board			1	\$3.15	
18	12222000003595	Installation Plate			1	\$42.24	
19	17222000028516	Electronic control box subassembly			1	\$159.30	
19.1	12122000004577	Electronic control box			1	\$3.00	
19.2	12122000004639	Left cover of electronic control box			1	\$11.55	

This information is to be used by qualified HVAC technicians only and is subject to revision without notice

KSIV018-H219-IW - Parts List No. P2IV1909

Above prices are subject to S&H charges

DATE 19-03

KSIV018-H219-IW - SPARE PARTS LIST

No.	Part Number	Part Name	Specifications	Stock No.	Qty.	Price	Remarks
19.3	12122000004632	Right cover of electronic control box			1	\$14.88	
19.4	17122000045126	Main control board subassembly			1	\$125.97	
19.5	11201007003424	Room temperature sensor			1	\$5.70	
19.6	11201007003447	Pipe Temperature Sensor			1	\$5.25	
19.7	17400401000006	Terminal			1	\$12.84	
20	12122000005020	Cover of electronic control box			1	\$1.20	
21	17317000A06740	Remote controller	RG57A6/BGEFU1		1	\$50.80	
22	12600701000039	Seal ring			1	\$0.15	
23	12100509000061	Drain hose			1	\$0.60	
28	12100501000032	Drain hose			1	\$7.65	
40	12100204000685	Air freshening filter			1	\$1.80	
42	15500209000001	Check valve			1	\$3.30	
46	15500406000016	Copper nut			1	\$5.10	
46	15500406000012	Copper nut			1	\$10.95	

This information is to be used by qualified HVAC technicians only and is subject to revision without notice

KSIV018-H219-IW - Parts List No. P2IV1909

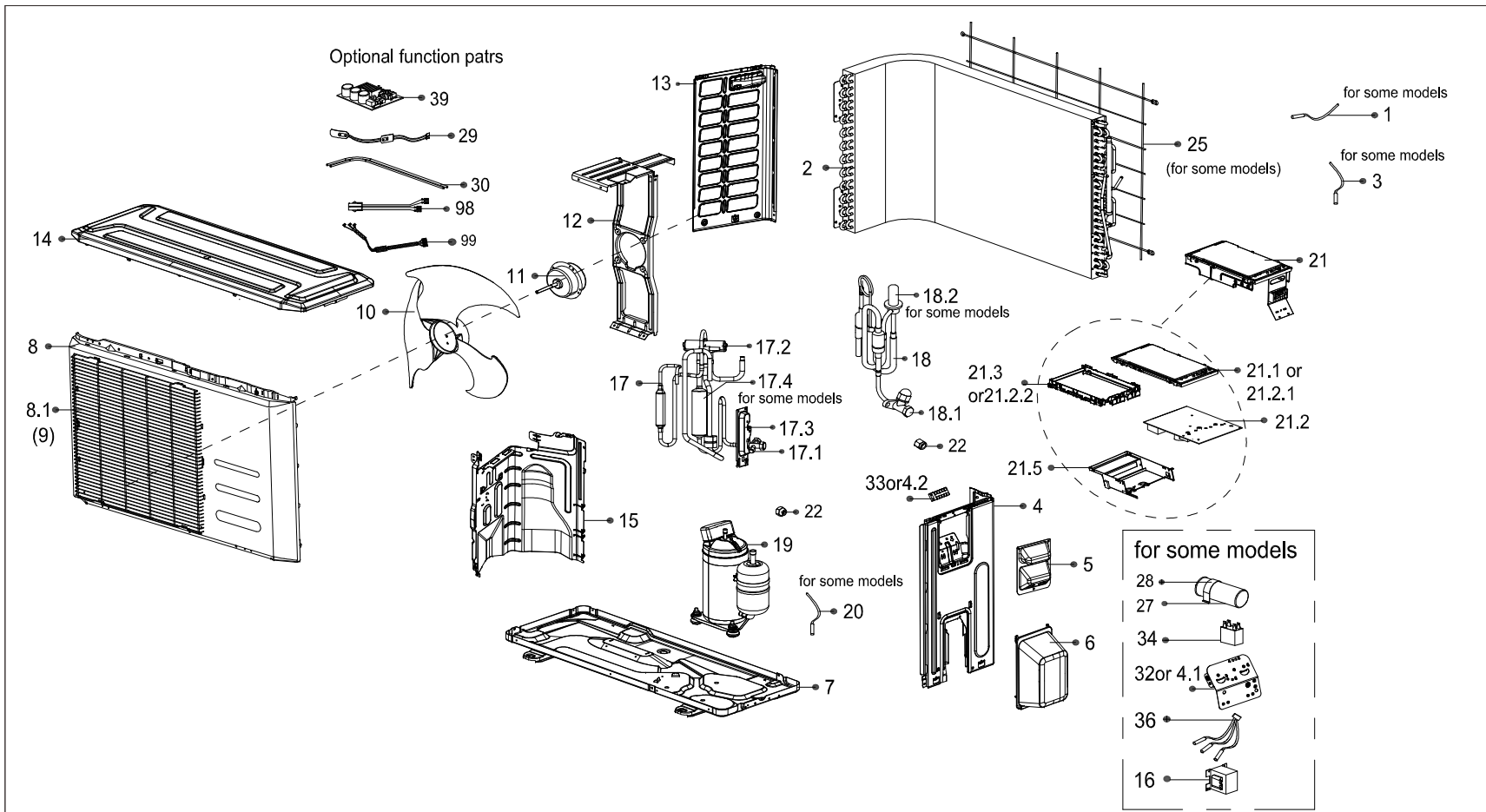
Above prices are subject to S&H charges

DATE 19-03

EXPLODED DIAGRAM - PARTS VIEW

Sales Model: KSIV018-H219-O

Power Supply: 208-230V / 1ph / 60Hz



This information is to be used by qualified HVAC technicians only and is subject to revision without notice

KSIV018-H219-O - Drawing No. D2IV1910

DATE 19-03

KSIV018-H219-O - SPARE PARTS LIST

No.	Part Number	Part Name	Specifications	Stock No.	Qty.	Price	Remarks
2	15822000008261	Condenser assembly			1	\$339.11	
4	12222000005745	Right clapboard assembly			1	\$45.10	
5	12222000010966	Big handle assembly			1	\$15.60	
6	12122000007150	Water collector			1	\$12.90	
7	12222000004326	Chassis assembly			1	\$85.40	
8	12222000004463	Front panel assembly			1	\$114.58	
9	12222000007424	Air outlet grille			1	\$55.40	
10	12100105000051	Axial flow fan	ZL-427*139*8-3KN		1	\$36.85	
11	11002015000039	Brushless DC Motor	ZKFN-34-8-1		1	\$133.03	
12	12222200002154	Supporter subassembly of fan motor			1	\$21.96	
13	12222000008484	Left side plate assembly of cabinet			1	\$37.07	
14	12222000002451	Top cover assembly			1	\$59.30	
15	12222000003984	Partition board assembly			1	\$32.89	
17	15422000013773	4-way valve assembly			1	\$259.65	
17.1	15500204000058	Gas valve			1	\$44.22	
17.2	15500216000026	4-way Valve			1	\$106.68	
17.3	12222000002571	Valve plate			1	\$8.85	
17.4	15500508000046	Muffler subassembly			1	\$60.80	
18	15422000004813	Liquid valve assembly			1	\$57.70	
18.1	15500208000028	Liquid valve			1	\$24.84	
19	11103020003919	DC Inverter Rotary Compressor	KSN140D21UFZ		1	\$329.50	
21	17222000028513	Electronic control box subassembly			1	\$309.53	
21.2	17122000045119	Outdoor main control board subassembly			1	\$283.65	
21.2.1	12222000001455	Cover of electronic control box			1	\$11.70	

This information is to be used by qualified HVAC technicians only and is subject to revision without notice

KSIV018-H219-O - Parts List No. P2IV1910

Above prices are subject to S&H charges

DATE 19-03

KSIV018-H219-O - SPARE PARTS LIST

No.	Part Number	Part Name	Specifications	Stock No.	Qty.	Price	Remarks
21.2.2	12122000006913	Support of electronic control box			1	\$12.90	
21.5	12222000008644	Electronic installing box subassembly			1	\$18.24	
22	15500406000012	Copper nut			1	\$10.95	
22	15500406000016	Copper nut			1	\$5.10	
25	12222000003622	Rear net			1	\$29.52	
29	17402001A00003	Crankcase electric heater			1	\$30.03	
30	17402002A00025	Electric heating tube			1	\$99.88	
32	12222000002259	Terminal board			1	\$1.35	
33	17400401000075	Terminal			1	\$13.32	
36	11201011000067	Combination Sensor			1	\$27.72	
99	17401203000802	Compressor wire subassembly			1	\$18.60	

This information is to be used by qualified HVAC technicians only and is subject to revision without notice

KSIV018-H219-O - Parts List No. P2IV1910

Above prices are subject to S&H charges

DATE 19-03