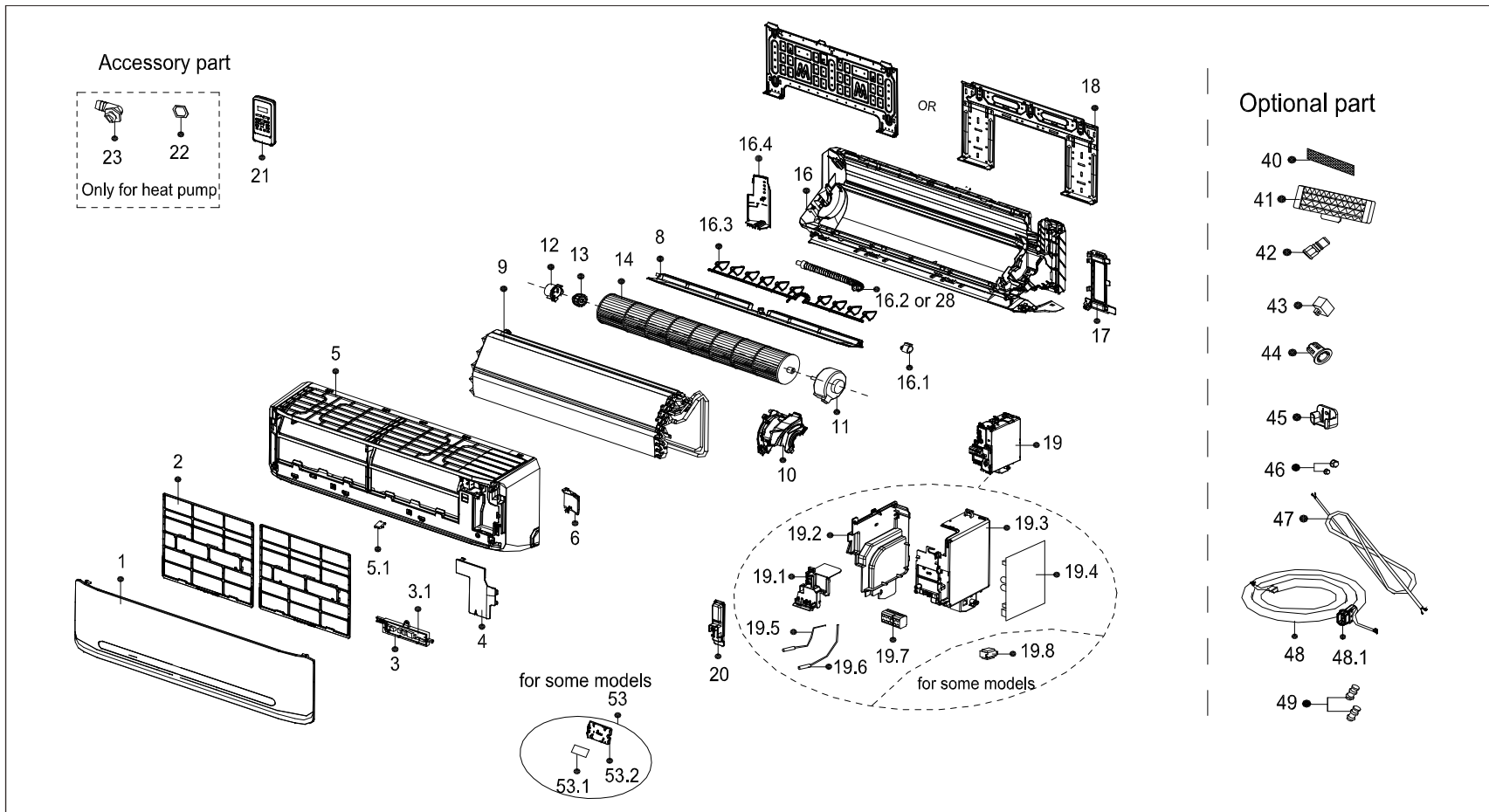


EXPLODED DIAGRAM - PARTS VIEW

Sales Model: KSIV012-H219-IW

Power Supply: 208-230V / 1ph / 60Hz



This information is to be used by qualified HVAC technicians only and is subject to revision without notice

KSIV012-H219-IW - Drawing No. D2IV1907

DATE 19-03

KSIV012-H219-IW - SPARE PARTS LIST

No.	Part Number	Part Name	Specifications	Stock No.	Qty.	Price	Remarks
1	12122000001521	Panel assembly			1	\$53.90	
2	12100204000522	Filter filter subassembly			2	\$9.75	
3	17222000002878	Display box subassembly			1	\$28.44	
3.1	17122000006953	Display board subassembly			1	\$16.80	
4	12122000006755	Cover of electrical equipment			1	\$4.50	
5	12122000001726	Panel frame assembly			1	\$74.80	
5.1	12122000009477	Screw Cap			1	\$0.15	
6	12122000004587	Front cover of chassis(right)			1	\$1.80	
8	12122000005815	Horizontal louver assembly			1	\$15.60	
9	15822000008189	Evaporator assembly			1	\$248.46	
10	12122000005540	Fan motor cover			1	\$8.40	
11	11002015000051	Brushless DC Motor	ZKFP-20-8-6-7		1	\$166.18	
12	12122000000350	Bearing holder			1	\$1.05	
13	12622000000006	Bearing base			1	\$2.10	
14	12100102000044	Cross flow fan	GL-94*605-N		1	\$45.32	
16	12122000011818	Chassis assembly			1	\$130.48	
16.1	11002010000143	Stepper motor	SM-24-19-16-8		1	\$16.44	
16.3	12122000000038	Vertical vane subassembly			1	\$4.50	
16.4	12122000010098	Front cover of chassis (left)			1	\$3.15	
17	12122000012943	pipe clamp board			1	\$2.70	
18	12222000A00811	Installation plate			1	\$28.49	
19	172220000028160	Electronic control box subassembly			1	\$159.83	
19.1	12122000004577	Electronic control box			1	\$3.00	
19.2	12122000004639	Left cover of electronic control box			1	\$10.35	

This information is to be used by qualified HVAC technicians only and is subject to revision without notice

KSIV012-H219-IW - Parts List No. P2IV1907

Above prices are subject to S&H charges

DATE 19-03

KSIV012-H219-IW - SPARE PARTS LIST

No.	Part Number	Part Name	Specifications	Stock No.	Qty.	Price	Remarks
19.3	12122000004632	Right cover of electronic control box			1	\$14.88	
19.4	17122000044667	Main control board subassembly			1	\$124.95	
19.5	11201007000085	Room temperature sensor			1	\$7.05	
19.6	11201007000322	Pipe temperature sensor			1	\$7.20	
19.7	17400401000006	Terminal			1	\$12.84	
20	12122000005020	Cover of electronic control box			1	\$1.20	
21	17317000A06740	Remote controller	RG57A6/BGEFU1		1	\$50.80	
22	12600701000039	Seal ring			1	\$0.15	
23	12100509000061	Drain hose			1	\$0.60	
28	12100501000032	Drain hose			1	\$7.65	
40	12100204000685	Air freshening filter			1	\$1.80	
42	15500209000001	Check valve			1	\$3.30	
46	15500406000012	Copper nut			1	\$10.95	
46	15500406000016	Copper nut			1	\$5.10	

This information is to be used by qualified HVAC technicians only and is subject to revision without notice

KSIV012-H219-IW - Parts List No. P2IV1907

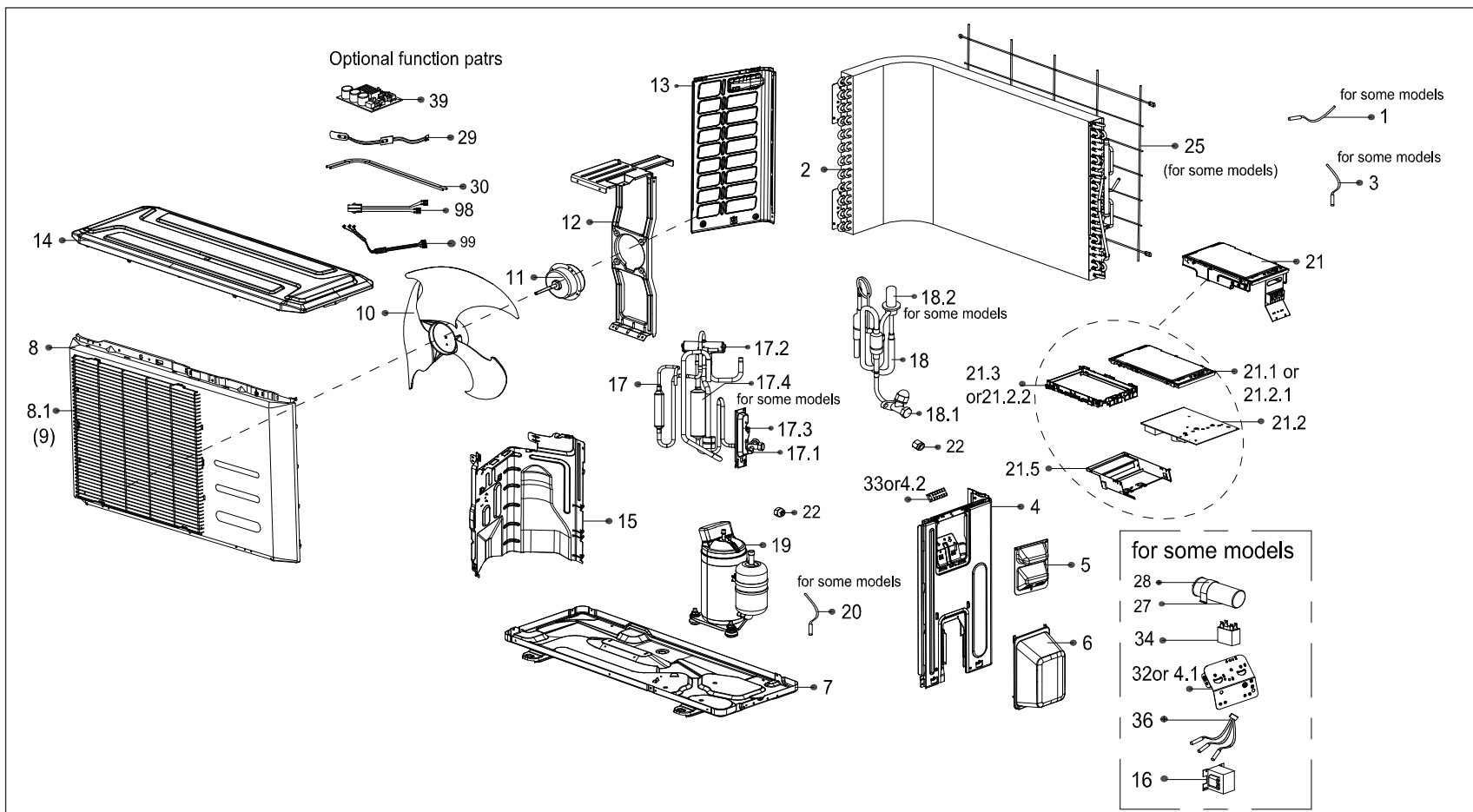
Above prices are subject to S&H charges

DATE 19-03

EXPLODED DIAGRAM - PARTS VIEW

Sales Model: KSIV012-H219-O

Power Supply: 208-230V / 1ph / 60Hz



This information is to be used by qualified HVAC technicians only and is subject to revision without notice

KSIV012-H219-O - Drawing No. D2IV1908

DATE 19-03

KSIV012-H219-O - SPARE PARTS LIST

No.	Part Number	Part Name	Specifications	Stock No.	Qty.	Price	Remarks
2	15822000008251	Condenser assembly			1	\$326.58	
4	12222000005745	Right clapboard assembly			1	\$45.10	
5	12222000010966	Big handle assembly			1	\$15.60	
6	12122000007150	Water collector			1	\$12.90	
7	12222000005062	Chassis assembly			1	\$85.40	
8	12222000004463	Front panel assembly			1	\$114.58	
9	12222000007424	Air outlet grille			1	\$55.40	
10	12100105000003	Axial flow fan	ZL-429*119*8-3KN		1	\$31.46	
11	11002015008264	Brushless DC Motor	ZKFN-34-8-1-3		1	\$143.65	
12	12222000009444	Supporter subassembly of fan motor			1	\$21.96	
13	12222000008484	Left side plate assembly of cabinet			1	\$37.07	
14	12222000002451	Top cover assembly			1	\$59.40	
15	12222000003984	Partition board assembly			1	\$32.89	
17	15422000016316	4-way valve assembly			1	\$193.05	
17.1	15500204000058	Gas valve			1	\$44.22	
17.2	15500216000028	4-way valve			1	\$89.76	
17.3	12222000002571	Valve plate			1	\$8.85	
17.4	15122000024525	Muffler subassembly			1	\$42.02	
18	15422000004913	Liquid valve assembly			1	\$54.23	
18.1	15500208000028	Liquid valve			1	\$24.84	
19	11103020005082	DC Inverter rotary compressor			1	\$331.08	
21	17222000028158	Electronic control box subassembly			1	\$271.02	
21.2	17122000044663	Outdoor main control board subassembly			1	\$351.00	
21.2.1	12222000001455	Cover of electronic control box			1	\$11.70	

This information is to be used by qualified HVAC technicians only and is subject to revision without notice

KSIV012-H219-O - Parts List No. P2IV1908

Above prices are subject to S&H charges

DATE 19-03

KSIV012-H219-O - SPARE PARTS LIST

No.	Part Number	Part Name	Specifications	Stock No.	Qty.	Price	Remarks
21.2.2	12122000006913	Support of electronic control box			1	\$12.90	
21.5	12222000001311	Electronic installing box subassembly			1	\$17.76	
22	15500406000016	Copper nut			1	\$5.10	
22	15500406000012	Copper nut			1	\$10.95	
25	12222000003622	Rear net			1	\$29.52	
29	17402001A00068	Defrost heating strip			1	\$33.33	
30	17402002A00025	Electric heating tube			1	\$99.88	
32	12222000002259	Terminal board			1	\$1.35	
33	17400401000075	Terminal			1	\$14.10	
36	11201011000067	Combination Sensor			1	\$27.72	
99	17401203000802	Compressor wire subassembly			1	\$18.60	

This information is to be used by qualified HVAC technicians only and is subject to revision without notice

KSIV012-H219-O - Parts List No. P2IV1908

Above prices are subject to S&H charges

DATE 19-03